

SWINDON TOWN



FOOTBALL CLUB

Official Programme

6d.

Mills & Merricks Ltd

For over 70 years we have been one of Swindon's leading house furnishers, offering a personal service. You cannot do better than to inspect our showrooms before making your final decision.

Also contractors to

County and Borough Councils

Hospitals

Government Departments

Factories

Schools etc.

Think about it after the game!

We are open until 6 p.m. each evening and 1 p.m. on Wednesdays.

Telephone 5365/6

16-17 BRIDGE STREET, SWINDON

TUESDAY, OCTOBER 19th, 1965

DIVISION THREE

SWINDON TOWN

v.

YORK CITY

Kick-off 7.30 p.m.

REFEREE:

Mr. J. K. TAYLOR (Wolverhampton)

LINESMEN:

Red Flag—Mr. J. GRIFFITHS (Witney)

Yellow Flag—Mr. C. J. MULLINGS (Devizes)

**Wiltshire's most versatile
Printers**

THE BOROUGH PRESS

Eastcott Hill, Swindon

Telephone 4022

Maylott Studios

For GROUP & SPORT Photographs

Official Photographer to
Swindon Town Football Club

31 FARINGDON ROAD

TEL. 22792

Notton's Cafe

COUNTY ROAD

200 yards from Ground

RIGHT ON THE BALL

L. Wollen

OFF LICENCE

WINES and SPIRITS

Arkell's Ales and Stout

373 Cricklade Rd., Swindon

Deliveries Daily

Phone 3508

C. DUNN & SON

Builders & Decorators

Alterations, Renovations,
Conversions, Plumbers &
Sanitary Engineers

503 CRICKLADE RD. Tel. 22522

W. COLLINS (Swindon) LTD.

TURF ACCOUNTANTS

69 COMMERCIAL ROAD - SWINDON

TEL. 21333

SWINDON TOWN FOOTBALL COMPANY LIMITED

Registered Office: COUNTY GROUND, SWINDON

Directors:

Mr. W. J. CASTLE (Chairman)

Mr. H. E. LANE (Vice-Chairman)

Messrs. F. L. COLLINGS, A. W. DONE, M. EARLE, R. FRICKER, C. J. GREEN,
F. PLYER, H. WILLIAMS and K. H. WILMER.

Manager: D. WILLIAMS.

Secretary: R. A. MORSE.

VOL. 16

TUESDAY, OCTOBER 19th, 1965

No. 6

CLUB NOTES

It was most unfortunate that after the excitement of the Bristol Rovers game, the match against Gillingham proved to be so drab and uninteresting.

It emphasises more than ever the points made in our last programme. The Bristol club must be highly commended in its decision to play bright, open attacking football, for the entertainment of the spectators — not to win at all costs.

The Saturday match was so frustrating, and of such a poor standard, that many supporters completely lost interest and left the ground long before the end of the game.

Such happenings can only lead to one thing, lack of support.

More is the pity, for our gate of 13,133 was by far the largest in Division III, and bigger than six in Division II. We feel our spectators have been very loyal in face of all the disappointments (three 0—0 home draws), and have supported the team extremely well, both regularly and vocally.

Why was the game so poor? The players must take the blame, they are the ones concerned. Whilst nothing seemed to go right for our team (the harder some of them tried, the worse things became), we certainly lost heart towards the end of the game.

WILSONS (SWINDON) LTD.

BUILDERS OF MODERN ATTRACTIVE
HOUSES AND BUNGALOWS

Enquiries to:

HEAD OFFICE: 90 COMMERCIAL ROAD, SWINDON 6361

SITE OFFICE: COVENTRY FARM ESTATE, WROUGHTON 271

SITE OFFICE: COLEVIEW ESTATE, STRATTON S.M. 314

Tel. Swindon 5884

W. J. SELWOOD

Saddlery

General Leather Goods Manufactured
and Repaired to Your Individual
Requirements

148a MANCHESTER ROAD
SWINDON, WILTS.

Always at your service

L. BIBBY

For all Types—Rags, Iron and Metal,
etc. Spot Cash Paid. Please Tel. 2101
and our van will call.

THE PADDOCK, ERMIN STREET
STRATTON ST. MARGARET

WISES CATERING SERVICE

(Reg. Wise)

Our Caterer for the past 17 seasons
Guarantees

A GOOD CUP OF TEA AT THE
COUNTY GROUND

A full range of Sweets & Cigarettes
at any of our five kiosks on your
way in. ENJOY YOURSELF

FOR

T.V. Rentals

GO TO

Warnes Rentals Ltd.

51 COMMERCIAL ROAD,
SWINDON

Phone: 6486

MARSHGATE GARAGE LTD.

Motor Engineers :: Rootes Group Dealers
STRATTON ROAD - SWINDON - WILTS.

Tel. Swindon 22788

TWO MINUTES FROM GROUND

CLUB NOTES—continued

Gillingham played dour football, fighting for every ball. Some of their players did a tremendous amount of chasing and fought hard, perhaps a little too hard at times, but there was nothing vicious about their play. They certainly defended in numbers, but they also came out in attack, with at times five players up field. We have got to learn to stand up to, and counteract, such tactics.

What most people objected to was the time-wasting, kicking the ball away to delay play, and the gamesmanship.

Many of us hoped for better things on Tuesday, when the Reserves entertained West Ham. Unfortunately the result proved to be the same, a 0—1 defeat. The game itself proved to be a bright, interesting affair, but again our forwards failed to score, although working hard to provide many chances, which were thrown away by poor or erratic shooting.

West Ham played their usual style of game: pushing the ball along the ground, from man to man. At times they seemed to be playing more backward than forward, something our spectators did not relish, but nevertheless they did attack, especially in the second half. The goal itself which won the game should certainly have been saved.

Again the attendance was excellent, almost three thousand people being present. We cannot complain about lack of support.

The financial position of many clubs seem to be in jeopardy, and it looks as if playing staffs will have to be reduced to a minimum. Last year Portsmouth took the drastic step of running one team only, with sixteen players available. Their results this season have been quite good. Clubs are watching

BRISTOL OMNIBUS CO. LTD.

REGENT CIRCUS, SWINDON

Tel. 22243

For all your travel requirements

- ★ Express Coach Service
- ★ British and Continental Holidays
- ★ Air Travel bookings
- ★ Butlin's Camps and Hotels
- ★ Bus Services in the West

LUXURY COACHES FOR PRIVATE HIRE

Suppliers to the Swindon Town Football Club

Swindon Sports Centre

SUPPORTERS SCARVES - RATTLES - Etc.

23 COMMERCIAL ROAD

Tel. 4270

ESTABLISHED 1923

DOBELL SHEARMAN

& CO. LTD.

£10 TYPEWRITERS from £10

Also full selection new standard and portable typewriters
OFFICE EQUIPMENT

29 High Street & 33 Faringdon Road, Swindon.

Tel. 4961/2

CLUB NOTES—continued

the position intently and considering similar measures. Torquay, currently top of Division 4, have definitely announced they will only budget for fifteen professionals next season.

It is obvious something of this nature will occur in many clubs. The money is just not there. Less and less people attend matches, but players demand more and more. Where will it end? Your guess is as good as mine.

Crowd behaviour is the concern of many at the present time (we are fortunate in this respect at Swindon), and the F.A. are doing everything possible to improve the image of the game. Sometimes it is the fault of the players, or the managers, or the Press (who can put words into people's mouths).

It is good, therefore, to read how one manager, although sorely tried, retained as quoted in the Press — “a dignified silence”. He merely stated, “It is the job of the club to uphold the referee”, when asked his opinion regarding two decisions—one the awarding of a goal against his team by the referee after consultation with the linesman, and again after consultation, the disallowing of a goal awarded to his own team.

The manager of a professional team is sorely tried, he plays every game probably harder than any of his players, and is often quite exhausted at the end of the match. At such a time he is apt to say something rather harsh, especially regarding referees. Not so in this case. The person concerned? A quiet, sound, reliable man — Fred Ford, of Bristol City. Such incidents do much for the good of the game.

OUR VISITORS

YORK CITY ASSOCIATION FOOTBALL AND ATHLETIC CLUB LTD.

PEN PICTURES — SEASON 1965/66

TOMMY FORGAN

Goalkeeper. In his eleventh season, has a remarkable record of consistency since joining the club from Hull City. Virtually first choice over a long period, is now classed as a veteran though still a capable keeper.

BARRY WEALTHALL

Right full back. In his third season with the club, after service with Grimsby Town and Nottingham Forest. Young stylish player in his early twenties and a sound defender. Former youth international.

GERRY BAKER

Full back. Formerly of Nottingham Forest. Played 41 matches last season. Strong defender, and a much improved player since joining the City. Has also appeared at centre half and centre forward.

TOMMY HERON

Full back. Joined the City from Manchester United in 1961. Has been first choice ever since. An attacking type of player, as befits his former position at outside left. Played in every match last season.

ALAN WOODS

Right half. Former Tottenham Hotspur and Swansea Town player. Commencing his fifth season with the club, where he has been a regular first team player. Enthusiastic and strong tackling player.

BARRY JACKSON

Centre half. Seasoned pivot, well known as a strong tackling player. Commanding local-born player, has been first choice since his debut six years ago. In his mid-twenties, has been the rock of the York defence. Played in 44 matches last season.

G. H. FLOWER & SON LIMITED

WOOD LANE, CHIPPENHAM

LICENCE No. S.2802

PHONE 2017

SCRAP METAL

and

GENERAL WASTE SALVAGE DEALERS

Plant dismantling carried out

Members of

National Association of Non-Ferrous Metal Merchants

THE PORK SHOP

(Swindon Bacon Curing Co. Ltd.)

Specialists in

BACON - PORK - COOKED HAM

50 FLEET STREET - SWINDON

TEL. 22122

Meet your friends for an enjoyable evening at

THE KINGSDOWN ARMS

(Host A. W. Vann)

FULLY LICENSED - ARKELL'S BEERS

SNACKS - Etc.

STRATTON ST. MARGARET

Tel. 3283

OUR VISITORS—continued

DENNIS WALKER

Left half. Young half back recruited from Manchester United in 1964. Very stylish, and is also useful at inside forward. Made 44 appearances last season and scored 15 goals.

DEREK WEDDLE

Right winger. Very experienced player, formerly of Sunderland, Portsmouth and Middlesbrough. Fast and tall for a winger, Derek, a part-time player, is a chiropodist by profession. Played 30 matches last season and scored 12 goals.

NORMAN WILKINSON

Inside forward. Regarded as the veteran of the side. With Forgan, the only remaining player on the staff who played in the York City F.A. Cup Semi-Final team. Formerly with Hull City, Norman is a great favourite at Bootham Crescent, where he is known as a good club man, well respected by all. Has scored over 150 goals since his debut.

PAUL AIMSON

Centre forward. Formerly with Manchester City. Top scorer last season with 30 goals. At 21 years of age this player should have a very bright future. Clean and clever, a real forager and a deadly shot in either foot.

BILLY RUDD

Inside forward. Captain of the side. Signed from Birmingham City in 1961. Probably one of the best ball-playing inside forwards in the game. Though on the small side, is tenacious and a real grafter.

ANDY PROVAN

Outside left. A young Scottish winger, formerly with St. Mirren. Fast and clever ball-player who knows the way to goal. An ever-present last season and scored 18 goals.

PETER POPELY

Right back. Local player in his second season as a professional.

- ★ Cedarwood Sheds
- ★ Workshops and Greenhouses



Made locally by

H. R. SPACKMAN
SHRIVENHAM ROAD - SWINDON - WILTS.
Telephone Swindon 4458



W. J. CASTLE

Office and Bakery:
4 and 5 MARKET STREET

SWINDON

Telephone 22017

Specialists—

BIRTHDAY CAKES - WEDDING CAKES
DAIRY CREAM - PASTRIES
BUNS - ROLLS - SPONGES

Do not let **CHILBLAINS** spoil a good game



RELAPERN

Price 2/6 from your CHEMIST

2/10 Post Paid from

BALLARD & CO. (CHEMISTS) LTD.

FARINGDON - BERKS

OUR VISITORS—continued

KEN BOYES

Centre half. In his ninth season with the club. Considered an unfortunate player whose first team appearances have been curtailed by Jackson's consistency.

GEOFF WOOD

Centre half. Local-born player in his second season as a professional. Only 20 years of age, but already showing signs of emulating the other local-born player, Jackson.

KEN MORTON

Outside left. New signing from Manchester United. Although only 18 years of age, great things are expected of this youngster, who is a former schoolboy international.

JOHN PEARSON

Inside forward. Signed with Morton from Manchester United. Another 18-year-old, former schoolboy international, hails from Wigan. A fine ball-player who should fit well in to the City scheme of play.

BOBBY CUNLIFFE

Inside forward, signed from Manchester City. Comes with a big reputation. Former colleague of Paul Aimson, and is the right age to have a bright future.

DAVE DUNMORE

Centre or inside forward. Signed this season from Leyton Orient. Dave returns to the club which gave him his first chance in the League. Formerly with Tottenham and West Ham United, David is a local player recruited from the same nursery, Cliftonville (York), as Barry Jackson. Should give much experience to the young City forward line and strengthen the goal scoring.

PETER LOWE

Wing half. Signed last season from Birmingham City. Young player of promise.

GEORGE HAMSTEAD

Outside left. Formerly with Rotherham United. Made 13 league appearances last season.

DIVISION III

League Table

	P	W	D	L	F	A	Pts.
Millwall	12	9	2	1	20	7	20
Grimsby	12	7	3	2	22	12	17
Hull	13	7	3	3	30	25	17
Watford	12	5	5	2	22	13	15
Oxford	11	6	3	2	20	12	15
Peterborough ...	12	6	3	3	24	18	15
Workington	11	5	4	2	26	12	14
Shrewsbury	12	6	2	4	20	15	14
Walsall	12	5	3	4	18	14	13
Gillingham	11	5	3	3	16	13	13
Mansfield	12	5	2	5	19	17	12
Swindon	13	4	4	5	13	13	12
Q.P.R.	12	5	2	5	19	21	12
Bristol R.	12	4	3	5	19	19	11
Brentford	12	3	4	5	17	12	10
York	12	4	2	6	20	28	10
Scunthorpe	12	4	2	6	15	16	10
Reading	11	2	5	4	13	17	9
Exeter	12	3	3	6	14	21	9
Bournemouth ...	11	2	4	5	9	13	8
Brighton	12	2	4	6	15	23	8
Southend	11	3	1	7	13	21	7
Swansea	12	3	1	8	12	35	7
Oldham	12	2	2	8	16	35	6

H. HIBBERD LIMITED
40 NEWPORT STREET, SWINDON
PLANT HIRE CONTRACTORS



TRACTORS & SCRAPERS
BULLDOZERS
DROTT SHOVELS
TRAXCAVATORS
DIGGERS

TELEPHONE - SWINDON 6125

Hatton's Newsagency

A. J. D. & N. J. Woodhouse

Newsagents :: Tobacconists
Confectioners

Agents for Wessex School of
Motoring

Booking Agents for Rimes Coaches

6 Regent Circus (near G.P.O.)
Telephone Swindon 22731

HULFORD MOTORS Ltd.

SELF DRIVE HIRE

Fleet of 1965 Fords
Anglias De-Luxe - Cortinas
De-Luxe - Zephyr 4s.

SHRIVENHAM ROAD

(200 yards from Football Ground)

Phone 4934

Large Car Park available

For High Class
Central Heating, Plumbing
Painting and Decorating
Electrical Installations
and Repairs

NORTH WILTS Sanitary & Heating Co. Ltd.

NEWPORT ST., SWINDON
Phone 5373/4

FLOODLIGHTING?

Warnes Installations

BATHURST CORNER, COUNTY RD., SWINDON

Electrical Contractors to the "Spartan"

LET US QUOTE FOR YOUR ELECTRICAL

RIGHT WING

SWINDON TOWN

Downsborough

Dawson (2)

Troll

Morgan (4)

Nurse (5)

Weaver (7)

Smart (8)

Lawton (9)

Bro

York's 12th Man

EVERY FRIDAY 6D. EVERY FRIDAY 6D.

RY FRIDAY 6

SWINDON

ECHO

Swindon Colours:
RED SHIRTS, WHITE SHORTS

AY 6D. EVERY FRIDAY 6D. EVE

Provan (11)

Rudd (10)

Aimson (9)

Dur

Dunphy (6)

Jackson (5)

Heron (3)

Wealt

Forgan

LEFT WING

YORK CITY

MILLS & MERRIC

For over 70 years we have been one of Swindon's
offering a personal service. You cannot do b
showrooms before making your final decision.
Also contractors to: County and Borough Council
ment Departments - Factories - Schools, etc.
Think about it after the game! We are open unti
1 p.m. on Wednesdays.

16-17 BRIDGE STREET, SWINDON.

Installations Limited

COUNTY RD., SWINDON. Tel. 27291

Contractors to the "Town"

OUR ELECTRICAL CENTRAL HEATING

SWINDON TOWN

LEFT WING

Downsborough

2) Trollope (3)

Nurse (5) Shergold (6)

Lawton (9) Brown (10) Rogers (11)

FRIDAY 6D. EVERY FRIDAY

SWINDON

ECHO

DAY 6D. EVERY FRI

6D. EVERY FRI

Swindon's 12th mar.

These teams are subject to alteration

Aimson (9) Dunmore (8) Pearson (7)

Jackson (5) Woods (4)

Wealthall (2)

Forgan

YORK CITY

RIGHT WING

MERRICKS LTD.

been one of Swindon's leading house furnishers, You cannot do better than to inspect our our final decision.

and Borough Councils - Hospitals - Govern- s - Schools, etc.

el We are open until 6 p.m. each evening and

, SWINDON.

Tel. 5365/6

McILROYS

RESTAURANT

for morning coffee, luncheon and afternoon tea - in pleasant surroundings - you will find McIlroys are top of the 'league'.

Full table service, best Beers and Wines. Parties and Functions catered for.

McIlroys Restaurant

64-72 Regent Street

Tel. 5294



THE ALCOHOL FUEL

COATE GARAGE

REPAIRS - OVERHAULS - WELDING
SERVICING - REBORING - TYRES

Props. E. V. & W. H. Mattick

Marlborough Rd., Swindon

SUPPORTERS' CLUB NOTES

For many years now, the relationship between the Directors and your Committee has been a very happy one, and this was further evinced last Monday evening when the Committee were invited to meet the Board in the '63' Club. Views and ideas were exchanged in a most cordial atmosphere, and there is no doubt these 'get togethers' are very helpful to both parties. Without such amiable co-operation it would be very difficult to function successfully, and the Committee very much appreciate the Board's approach to this question.

Supporters will recall that one of the Town's young players, N. Prosser, had his playing career permanently ended when he sustained injuries whilst playing for the 'A' team last season. The Committee have now decided to sponsor a match for his benefit; the game will take place on the County Ground sometime in November between Swindon Town and an 'All Stars XI'. Further details will be announced as soon as possible.

The collection for W. Shergold's benefit amounted to £70-6-0 and, in accordance with our usual practice in these cases, this sum has been made up to £75 from funds.

Xmas Draw

Tickets for the Xmas Draw, price 1/-, are now available to members. With a total prize list of £250 there is sure to be a keen demand, and members are advised to obtain their tickets as early as possible.

Weekly Competition

Sales in the Weekly Competition have steadily increased and now approximate to 7,700 tickets per week. There is still an

Exeter City v. Swindon Town
SATURDAY, 30 OCTOBER
Excursion Bookings to
EXETER ST. DAVID'S
25/-

Depart Swindon 09.16



British Rail

Western Region

This space
reserved

SUPPORTERS' CLUB NOTES—continued

urgent demand for additional agents and anyone willing to assist in this direction should contact the Competition Secretary, Tom Stenning, at Club Headquarters or 40 Hesketh Crescent, Swindon (Telephone: Swindon 6827) as quickly as possible.

Supporters Sunday Football Team

Since writing the notes for our last issue, the Sunday Football Team have played two games: on 3rd October lost at home to Park Boys 5—4, and the following Sunday lost to Square D (away) 4—1. One consolation — the spectators are getting plenty of goals, even if they don't always appear in the right column.

Pre-Match Musical Programme

Requests for records to be included in the pre-match programmes of music are now coming in, but the music sub-committee would like to see a lot more requests as it is the intention to try and arrange these programmes to meet the tastes of the listeners as far as possible. The requested items, if in sufficient quantity, can give an indication of the various classes of records likely to meet with more general approval.

An application form is appended hereto, so please let us know your own particular favourite tune as soon as possible.

F. J. ROPER
Devizes Rd.
Swindon
Phone 22341

F. J. ROPER
Cliftonian
38 William St.
Swindon
Phone 3785

Swindon's
Finest
FISH and CHIPS

**CALL ON
YOUR
WAY
HOME**

M e n u

**PLAICE
HAKE
COD
SKATE**

**WE SHALL BE
WAITING
TO
SERVE YOU**

F. J. ROPER
High St.
W'tton Bassett

F. J. ROPER
Cross Hayes
Malmesbury

S.T.F.C. SUPPORTERS' CLUB

RECORD REQUEST

Please include the following record in the programme of pre-match music on 196... or as soon as possible thereafter.

TITLE

by

Name Mr./Mrs./Miss

Address

.....

.....

To: The General Secretary,
S.T.F.C. Supporters' Club,
County Ground,
Swindon.

not just concrete, but . . .

Premix



CLARK BROS. (Swindon) Ltd.

Building and Civil Engineering Contractors

CONSULT US FOR
BUILDING AND CIVIL ENGINEERING
CONSTRUCTION IN ALL ITS PHASES

STRATTON ROAD
SWINDON

Telephone
Swindon 27261

The Advertisers in this programme have supported the Club. Will you help us reciprocate by supporting them whenever possible?

DIVISION III

Date	Opponents 1965	Ground	Result
August 21	OXFORD UNITED	(H)	0—0
23	YORK CITY	(A)	2—0
28	SWANSEA TOWN	(A)	1—1
September 1	HULL CITY	(A)	0—1
4	WALSALL	(H)	0—0
7	BRISTOL ROVERS	(A)	1—0
11	WORKINGTON	(A)	3—0
18	BOURNEMOUTH & B.A.	(H)	0—0
24	SOUTHEND UNITED	(A)	2—4
October 2	WATFORD	(A)	0—2
5	BRISTOL ROVERS	(H)	4—3
9	GILLINGHAM	(H)	0—1
16	MILLWALL	(A)	0—1
19	YORK CITY	(H)
23	PETERBOROUGH UNITED	(H)
30	EXETER CITY	(A)
November 6	READING	(H)
13	(1)	(H)
20	MANSFIELD TOWN	(H)
27	QUEEN'S PARK RANGERS	(A)
December 4	(2)	(A)
11	SCUNTHORPE UNITED	(A)
18	MILLWALL	(H)
27	GRIMSBY TOWN	(A)
28	GRIMSBY TOWN	(H)
1966			
January 1	GILLINGHAM	(A)
8	HULL CITY	(H)
15	PETERBOROUGH UNITED	(A)
22	(3)	(A)
29	OXFORD UNITED	(A)
February 5	SWANSEA TOWN	(H)
12	(4) BRENTFORD	(H)
19	WALSALL	(A)
26	WORKINGTON	(H)
March 5	(5) BRENTFORD	(A)
12	BOURNEMOUTH & B.A.	(A)
19	SOUTHEND UNITED	(H)
26	(6) WATFORD	(H)
April 1	READING	(A)
9	BRIGHTON & HOVE ALBION	(H)
11	OLDHAM ATHLETIC	(H)
12	OLDHAM ATHLETIC	(A)
16	MANSFIELD TOWN	(A)
23	(S.F.) QUEEN'S PARK RANGERS	(H)
26	SHREWSBURY TOWN	(H)
30	BRIGHTON & HOVE ALBION	(A)
May 7	SCUNTHORPE UNITED	(H)
14	(FINAL)
18	SHREWSBURY TOWN	(A)
28	EXETER CITY	(H)

© The Football League, Limited, 1965

BRETTS

PET AND GARDEN SUPPLIES

32-33 Commercial Rd.
Swindon

6 Cromwell St.
Swindon

HOLMES & LUCAS

For a complete range of the very latest in radio,
television and all domestic appliances

Home demonstrations. Top Part Exchanges

HOLMES & LUCAS, 14 Regent Street

Tel. 22526 & 4721

FOR ALL YOUR ANGLING NEEDS
CONSULT

FRANK WOODWARD

Swindon's Fishing Tackle Specialist
25 HAVELOCK ST., SWINDON
PHONE 3879

For Paints of Good Quality

H. S. HODGES & SONS (SWINDON) LTD.

CRICKLADE RD., SWINDON
PHONE 22422

Dulux, Brolac, Valspar, Wallcharm,
etc.

SOUTHERN LAUNDRY Co. Ltd.

Launderers and Dry Cleaners

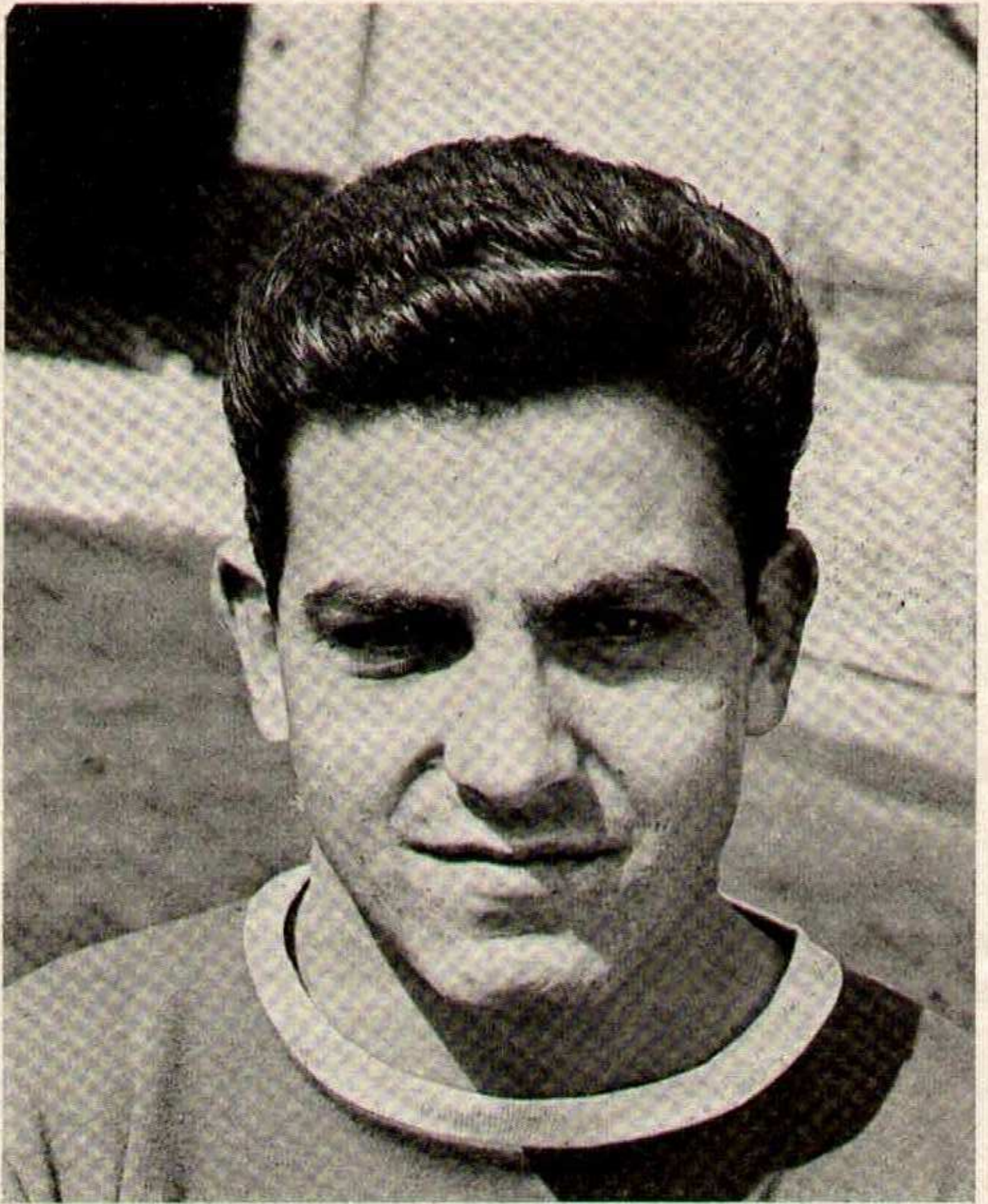
HAYDON ST. - SWINDON
TELEPHONE 4161

COMLEY'S

Modern Music Centre

26 HAVELOCK ST., SWINDON

RECORDS - MUSIC - INSTRUMENTS
Top Twenty 'Pops' always in stock
and wide selection of Jazz & Classics
Personal Supervision Phone 3874



DON ROGERS

NEW HOUSES IN SWINDON

AND THROUGHOUT

WILTSHIRE FOR PEOPLE

WHO APPRECIATE VALUE

BRADLEY
ESTATES 

74 VICTORIA ROAD, SWINDON

Tel. 5865

FORTHCOMING MATCHES

SATURDAY, 23rd OCTOBER, 1965

DIVISION III

PETERBOROUGH UTD.

Kick-off 3 p.m.

TUESDAY, 26th OCTOBER, 1965

FOOTBALL COMBINATION

LEICESTER CITY

Kick-off 7.30 p.m.

SATURDAY, 6th NOVEMBER, 1965

DIVISION III

READING

Kick-off 3 p.m.

Cecil Green

Artistic Decorations in all its branches

12 Armstrong Street, Swindon, Wilts. Tel. 4593

G. A. STREETLY

Tobacconist and Confectioner

10 BOURNE ROAD - MOREDON - SWINDON

Telephone: 4956

"COAL!"
"COAL!"
"COAL!"

J. WILMER

St. Margaret's Road
Swindon

TELEPHONE 22535

LEESE, ING & CO. LTD.

Mineral Water and Squash Manufacturers

LANSDOWN ROAD - SWINDON

TELEPHONE 22744

FOOTBALL COMBINATION

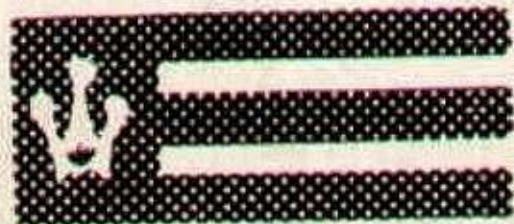
Date	Opponents	Ground	Result
1965			
August 21	Crystal Palace	(A)	0—2
28	Plymouth Argyle	(H)	2—1
31	Tottenham Hotspur	(H)	0—3
September 4	Northampton Town	(A)	1—5
11	Chelsea	(H)	6—2
18	Arsenal	(A)	1—4
25	Tottenham Hotspur	(A)	1—3
October 2	Ipswich Town	(H)	1—3
9	Norwich City	(A)	1—1
12	West Ham United	(H)	0—1
19	Coventry City	(A)
26	Leicester City	(H)
November 10	Cardiff City	(A)
13	Peterborough United	(H)
20	Fulham	(A)
23	Southampton	(H)
December 4	West Ham United	(A)
11	Norwich City	(H)
18	Leicester City	(A)
27	Ipswich Town	(A)

1966

January 4	Coventry City	(H)
8	Peterborough United	(A)
11	Cardiff City	(H)
18	Shrewsbury Town	(H)
29	Crystal Palace	(H)
February 5	Plymouth Argyle	(A)
12
15	Northampton Town	(H)
26	Chelsea	(A)
March 3	Shrewsbury Town	(A)
8	Arsenal	(H)
19
26
29	Fulham	(H)
April 9	Southampton	(A)
16	Nottingham Forest	(A)
23
30	Nottingham Forest	(H)
May 7
14
21
28

Suppliers to the Swindon Team

MAY WE SUPPLY YOU?



EARLE

of Chippenham Limited

MAIN



DEALERS

COCKLEBURY ROAD - CHIPPENHAM

Telephone 3255

SEASON 1965 / 66

	Football League		Football Combination	
	Appearances	Goals	Appearances	Goals
Downsborough	12			
Dawson	7		2	
Trollope	12			
Morgan	12			
Hallett	3		5	1
Atherton	11			
Weaver	11	1		
Hunt	5		1	2
Keyworth	5		2	
Brown	11	4		
Rogers	12	4	1	1
Nurse	9			
Smart	8	2	1	
Butler	6		3	
East	3	1	7	
Lawton	4			
Skeen	1	1	9	3
Shergold	1		7	
Oakley			5	
Griffin			9	1
Thomas			8	
Giles			7	
Sproates			6	1
Tabor			9	1
Lloyd			7	1
Walker			6	2
Hicks			4	
Jeffrey			1	
Lewis			2	
Spackman			1	
Corbett			3	
Perry			2	
Desmeules			2	

**BRITAIN'S FASTEST GROWING
TRADE UNION**

ASSET

(Association of Supervisory Staffs, Executives & Technicians)

**Specialises exclusively in the problems of
Supervisors, Executives and Technicians**

Full particulars:

INDUSTRIAL OFFICER, 24 BRUNSWICK SQUARE, GLOUCESTER

Telephone: Gloucester 27633

Gates from £3

Singles and Doubles

If you live in the Swindon area
we will measure your gateway
for you

**Manufacturers of tip-up stadium
seating**

Send for free catalogue

MARTYN LYN SHAW LIMITED

20 Boundary Works

Stratton Road SWINDON 4177



Gatemaster

